



# 1510F ORAS SWEA ECO WASHBASIN FAUCET

SINGLE-LEVER, COLD START

EAN: 6414150085680 [static.oras.com/1510F](http://static.oras.com/1510F)



- Deck mounted
- Chrome
- Fixed spout
- Standard aerator
- Single operating lever/handle, Hot/Cold symbols
- Chain holder without chain
- Limitation option for maximum temperature and flow-rate, Energy saving variation (Cold Start) - cold water in the middle position
- ø 35 mm ceramic eco cartridge for flow and temperature control
- Flexible inlet pipes
- Rapid installation system

## TECHNICAL DATA

### FLOW PROPERTIES

|   |           |
|---|-----------|
| Eco-flow at 300 kPa                         | 0.068 l/s |
| Flow-rate at 300 kPa (with flow controller) | 0.1 l/s   |
| Pressure loss with flow (0.1 l/s)           | 200 kPa   |

### TECHNICAL PROPERTIES

|                  |               |
|------------------|---------------|
| Hot water supply | max. +70°C    |
| Working pressure | 50 - 1000 kPa |
| Connection size  | G3/8          |
| Projection       | 103 mm        |
| Material         | Brass         |

### REGULATIONS

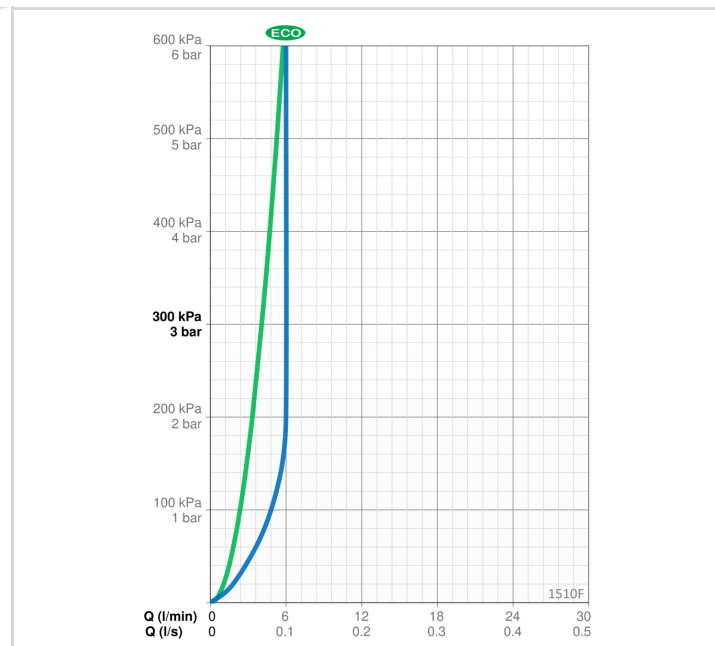
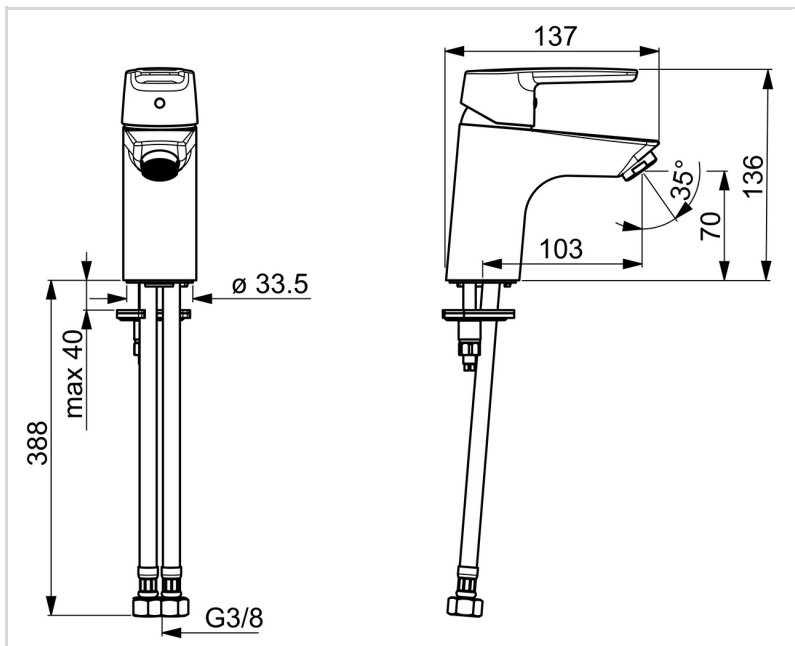
|             |                        |
|-------------|------------------------|
| EN standard | EN 817                 |
| Noise class | I (ISO 3822) Oras lab, |

### APPROVALS AND DECLARATIONS

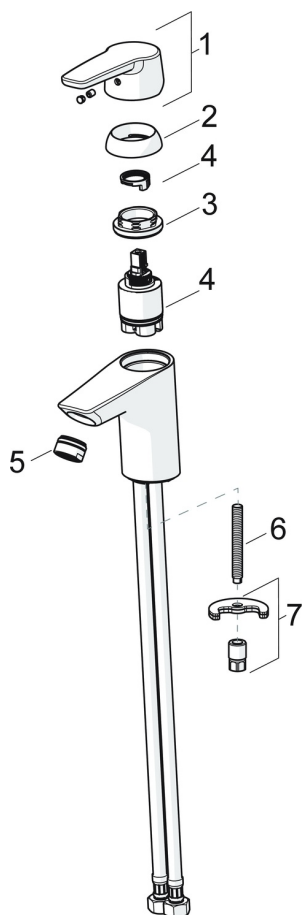
|                           |           |
|---------------------------|-----------|
| SE Energy Mark            | 1408      |
| KIWA SE                   | 1441      |
| Declaration of conformity | DoC       |
| EPD                       | S-P-06391 |

### SUSTAINABILITY

|                               |         |
|-------------------------------|---------|
| EPD module A1-A3 (kg CO2 eq.) | 6,14    |
| EPD module A4 (kg CO2 eq.)    | 0,17    |
| EPD module B7 (kg CO2 eq.)    | 1260,72 |
| EPD module C2 (kg CO2 eq.)    | 0,01    |
| EPD module C3 (kg CO2 eq.)    | 0,01    |
| EPD module C4 (kg CO2 eq.)    | 0,05    |
| EPD module D (kg CO2 eq.)     | -4,37   |



**SPARE PARTS**



**SP1510F**

| Name  | Code     |
|---|----------|
| 01 Lever Chrome                             | 1003170V |
| 02 Covering cap Chrome                      | 601967V  |
| 03 Tightening nut, M40x1, SW30              | 1003409V |
| 04 Cartridge, 3.5 cold start                | 602672V  |
| 05 Aerator, M24x1, 6 l/min Chrome           | 601974V  |
| 05 Aerator, M24x1 PCA 5 l/min (-105) Chrome | 1003828V |
| 06 Fixing screw, M8x1, L=140                | 601970V  |
| 07 Fixing set                               | 601985V  |