



# 1535F-106 ORAS SWEA ECO KITCHEN FAUCET WITH DISHWASHER VALVE

DISCONTINUED

SINGLE-LEVER, DISHWASHER VALVE, COLD START

EAN: 6414150100239 [static.oras.com/1535F-106](http://static.oras.com/1535F-106)



- ECO Building, Housing
- Deck mounted
- Chrome
- Swivel spout, Swivel range limiting option
- Standard aerator
- Mechanic stop valve for external equipment
- Single operating lever/handle, Hot/Cold symbols
- Limitation option for maximum temperature and flow-rate, Energy saving variation (Cold Start) - cold water in the middle position
- $\varnothing$  35 mm ceramic cartridge for flow and temperature control
- Flexible inlet pipes
- Inner body made of DZR brass

## TECHNICAL DATA

### FLOW PROPERTIES

Eco-flow at 300 kPa	0.066 l/s
Flow-rate at 300 kPa (with flow controller)	0.1 l/s

### TECHNICAL PROPERTIES

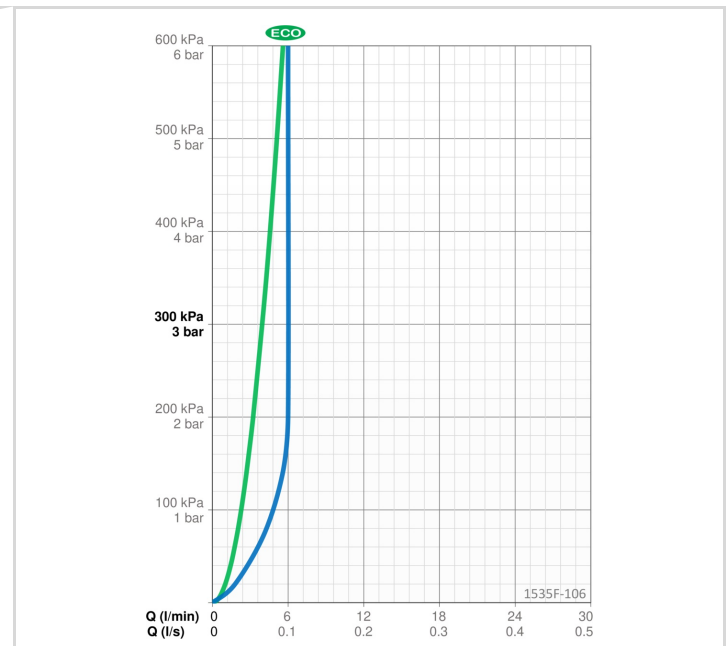
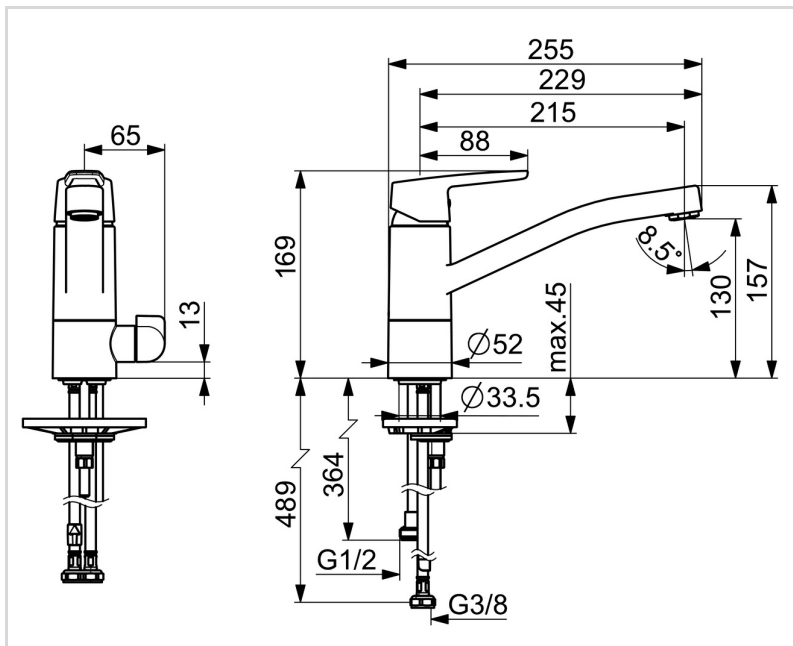
Hot water supply	max. +70°C
Working pressure	50 - 1000 kPa
Connection size	G3/8
Projection	215 mm
Backflow prevention (EN1717)	AA
Material	Brass

### REGULATIONS

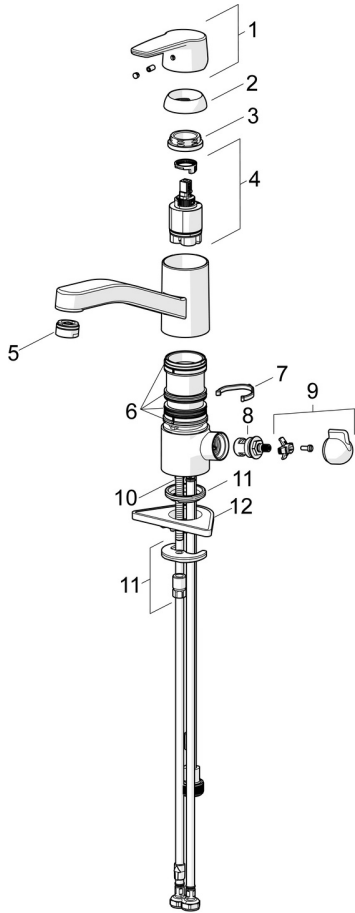
EN standard	EN 817
Noise class	I (ISO 3822) Oras lab.

### APPROVALS AND DECLARATIONS

KIWA SE	1445
Declaration of conformity	DoC



**SPARE PARTS**



**SP1535F-GB**

	<b>Name</b>	<b>Code</b>
01	Lever Chrome	1003170V
02	Covering cap Chrome	601967V
03	Tightening nut, M37x1, SW30	1005680V
04	Cartridge, 3.5 cold start	602672V
05	Aerator, M24x1, 6 l/min Chrome	199266V
05	Aerator, M24x1, -104	601434V
06	Sealing kit	1001264V
07	Spout overturning stopper, 120°	1001406/10
08	Headpart, G1/2	602600V
09	Handle for washing machine valve Chrome	1005697V
10	Fixing screw, M8x1, L=140	601970V
11	Fixing set	601985V
12	Supporting plate, 100x60mm	158825