



1536F-106 ORAS SWEA ECO KITCHEN FAUCET WITH DISHWASHER VALVE

SINGLE-LEVER, SIDE OPERATED, DISHWASHER VALVE

EAN: 6414150103209 static.oras.com/1536F-106



- ECO Building
- Deck mounted
- Chrome
- Swivel range limiting option
- Standard aerator
- Mechanic stop valve for external equipment
- Single operating lever/handle, Hot/Cold symbols
- Limitation option for maximum temperature and flow-rate, Energy saving variation (Cold Start) - cold water in the middle position
- ø 35 mm ceramic eco cartridge for flow and temperature control
- Flexible inlet pipes
- Rapid installation system

TECHNICAL DATA

FLOW PROPERTIES

Eco-flow at 300 kPa	0.081 l/s
Flow-rate at 300 kPa (with flow controller)	0.091 l/s

TECHNICAL PROPERTIES

Hot water supply	max. +70°C
Working pressure	50 - 1000 kPa
Connection size	G3/8
Projection	203 mm
Backflow prevention (EN1717)	EB
Material	Brass

REGULATIONS

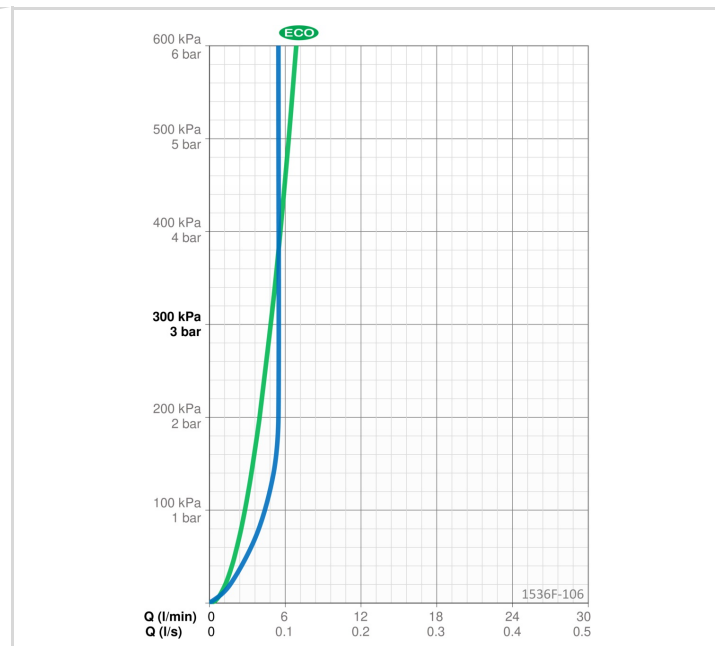
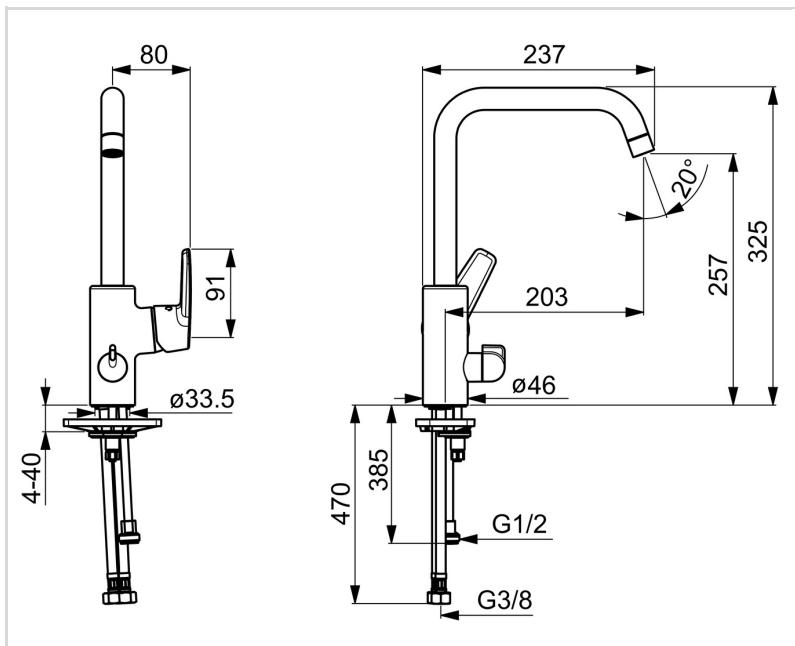
EN standard	EN 817
Noise class	I (ISO 3822) Oras lab.

APPROVALS AND DECLARATIONS

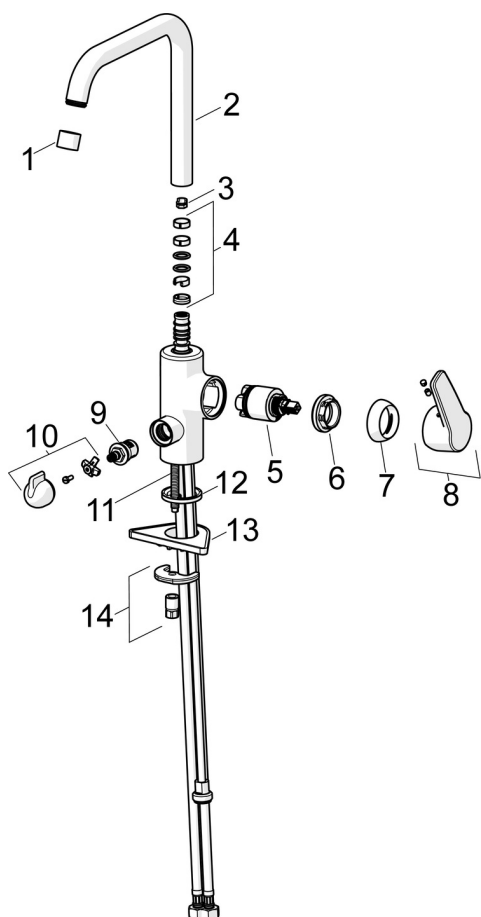
SE Energy Mark	1552
KIWA SE	1445
Declaration of conformity	DoC
EPD	S-P-06396

SUSTAINABILITY

EPD module A1-A3 (kg CO2 eq.)	14,80
EPD module A4 (kg CO2 eq.)	0,30
EPD module B7 (kg CO2 eq.)	1914,84
EPD module C2 (kg CO2 eq.)	0,02
EPD module C3 (kg CO2 eq.)	0,02
EPD module C4 (kg CO2 eq.)	0,45
EPD module D (kg CO2 eq.)	-8,36



SPARE PARTS



SP1536F-GB

Name	Code
01 Aerator, M22x1 STD HC PCA, 6 l/min Chrome	1001071V
02 High spout Chrome	1001049V
03 Spout overturning stopper, 60°/0°	159667/10
03 Spout overturning stopper, 120°	159670/10
04 Sealing kit for spout	1001098V
05 Cartridge, 3.5 cold start	602672V
06 Tightening nut, M40x1, SW30	1003409V
07 Covering cap Chrome	601967V
08 Lever Chrome	1000150V
09 Headpart, G1/2	602600V
10 Handle for washing machine valve Chrome	1005697V
11 Fixing screw, M8x1, L=140	601970V
12 Bottom seal	1002371V
13 Supporting plate, 100x60mm	158825
14 Fixing set	601985V