



2838FN ORAS OPTIMA KITCHEN FAUCET

SINGLE-LEVER

EAN: 6414150102417 static.oras.com/2838FN



The Oras Optima is the perfect fit for any kitchen, with a proven expert quality you can rely on, no matter your specific needs. Durable and long-lasting in both design and service life, this faucet brings you joy and confidence for years to come. Functional considerations and a dedicated level of detail offer a new user experience.

Single-lever design for easy temperature and flow control. The swivel spout allows for maximum flexibility, while the pin-shaped handle with hot and cold symbols ensures effortless operation. With a standard aerator and flexible inlet pipes, installation is a breeze. Plus, the \varnothing 40 mm ceramic cartridge provides precise flow and temperature control, with an option for maximum temperature and flow-rate limitation.

- Deck mounted
- Chrome
- Swivel spout
- Standard aerator
- Single operating lever/handle, Pin shape, Hot/Cold symbols
- Limitation option for maximum temperature and flow-rate
- \varnothing 40 mm ceramic cartridge for flow and temperature control
- Flexible inlet pipes

TECHNICAL DATA

FLOW PROPERTIES

Flow-rate at 300 kPa	0.2 l/s
Pressure loss with flow (0.2 l/s)	300 kPa

TECHNICAL PROPERTIES

Hot water supply	max. +70°C
Working pressure	50 - 1000 kPa
Connection size	G3/8
Projection	225 mm
Material	Brass

REGULATIONS

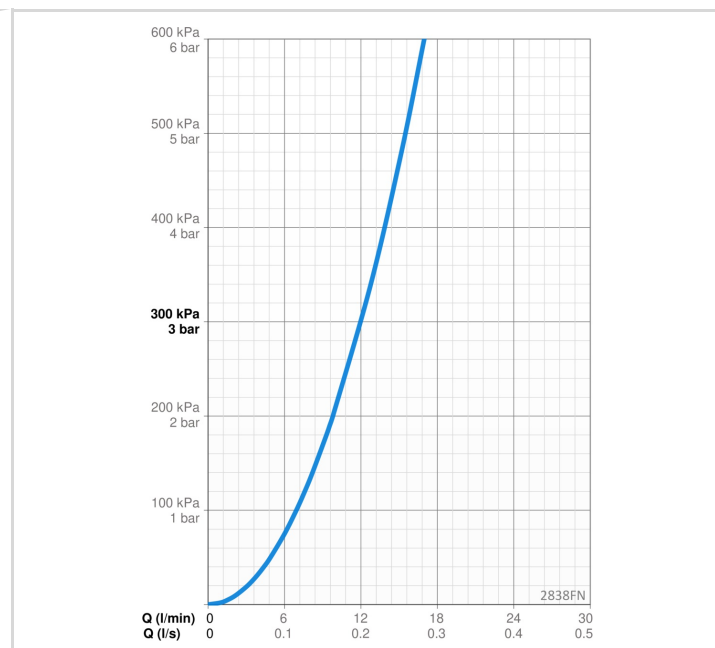
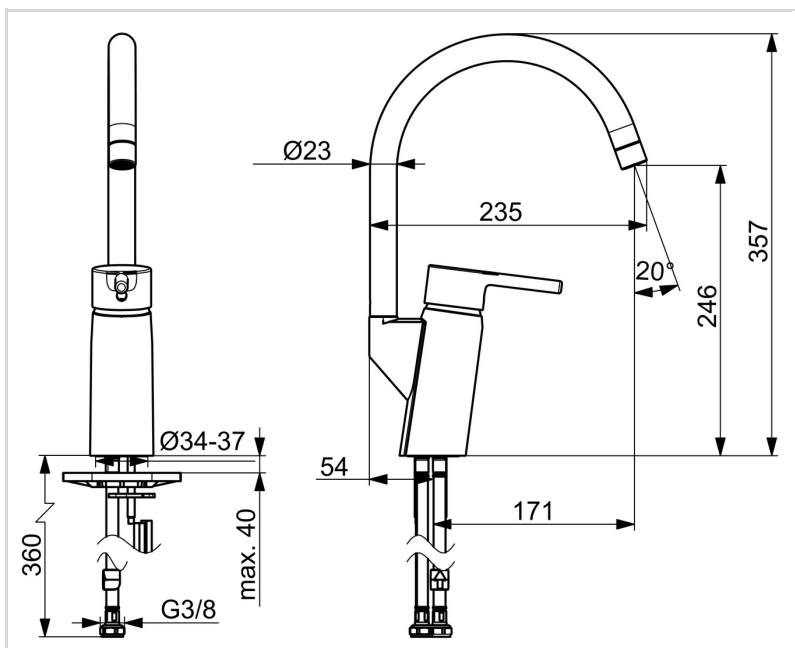
Noise class	I (ISO 3822)
-------------	--------------

APPROVALS AND DECLARATIONS

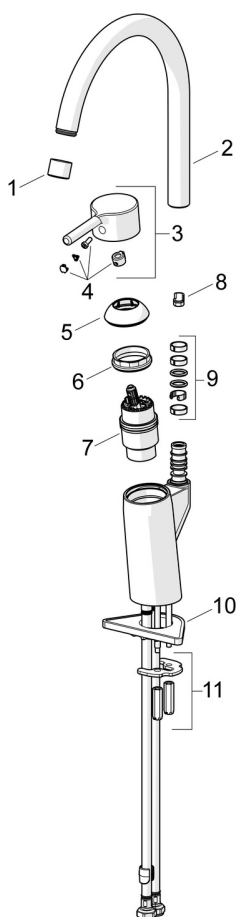
STF certificate	EUF129-24003510-TH
KIWA SE	1607
Declaration of conformity	DoC
EPD	S-P-06396

SUSTAINABILITY

EPD module A1-A3 (kg CO2 eq.)	13,31
EPD module A4 (kg CO2 eq.)	0,27
EPD module B7 (kg CO2 eq.)	4728,00
EPD module C2 (kg CO2 eq.)	0,02
EPD module C3 (kg CO2 eq.)	0,02
EPD module C4 (kg CO2 eq.)	0,40
EPD module D (kg CO2 eq.)	-7,52



SPARE PARTS



SP2838FN

Name	Code
01 Aerator, M22x1 STD CC A Chrome	1001070V
02 High spout, L=208 Chrome	1001058V
03 Lever Chrome	1015157V
04 Symbol plug	1002323V
05 Covering cap Chrome	159053V
06 Tightening nut, M42x1.5, SW 38	158726
07 Cartridge	158890
08 Limiter, 120°	602499V
09 Sealing kit for spout	1001098V
10 Supporting plate, 100x60mm	158825
11 Fixing plates with nuts	158697