



# 3016FT ORAS INSPERA WASHBASIN FAUCET, 230/9 V, BLUETOOTH

TOUCHLESS, PLUG TRANSFORMER, BLUETOOTH®

EAN: 6414150082498 [static.oras.com/3016FT](http://static.oras.com/3016FT)

Touchless washbasin faucet with a temperature adjustment handle. The faucet is equipped with litter filters, non-return valves and Autofocus sensor which enables installation without adjustments. Bluetooth connection enables easy monitoring and adjustments of the faucet. Flow rate 6 l/min. Electrical connection with a plug transformer 230/9 V. Alternative: concealed power supply 199275 (12 V). A maximum five of these items can be connected to the power supply at a time.

F = with flexible pipes

- Deck mounted
- Chrome
- Fixed spout
- Temperature control handle
- Adjustable hot water stop (included, retrofittable)
- Mixing valve for manual temperature control, Non-return valve(s), Litter filter(s)
- Autofocus infrared sensor, Solenoid valve, Power supply
- Flexible inlet pipes
- Inner body made of DZR brass, 3S-installation system for safe and simple mounting, Software settings adjustable via App



## TECHNICAL DATA

### FLOW PROPERTIES

Flow-rate at 300 kPa (with flow controller)	0.1 l/s
Pressure loss with flow (0.1 l/s)	200 kPa

### TECHNICAL PROPERTIES

Hot water supply	max. +70°C
Working pressure	100 - 1000 kPa
Connection size	G3/8
Projection	138 mm
Backflow prevention (EN1717)	AA
Material	Brass

### SOFTWARE SETTINGS

Afterflow period	3 s (1-20 s)
Automatic flush	off (off/1-120 h)
Automatic flush period	30 s (1-1800 s)
Max. flow period	2 min (1 - 1800 s)

### ELECTRONIC PROPERTIES

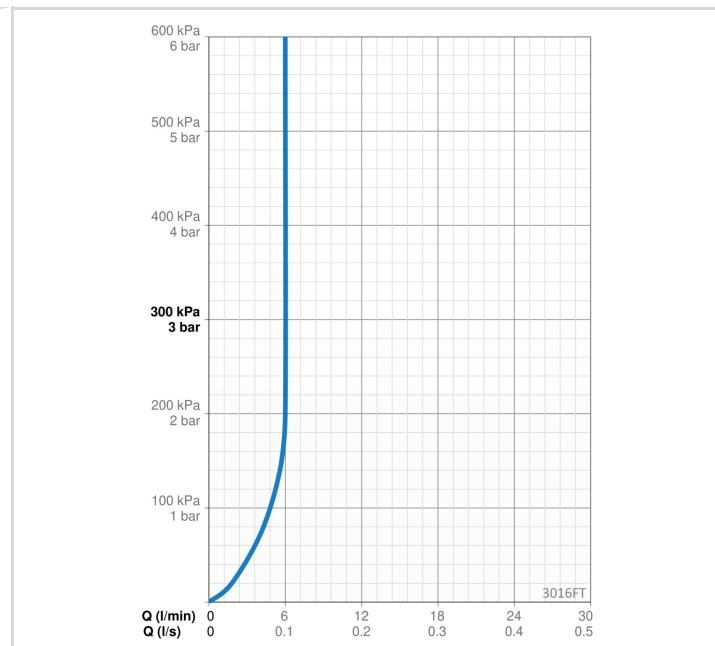
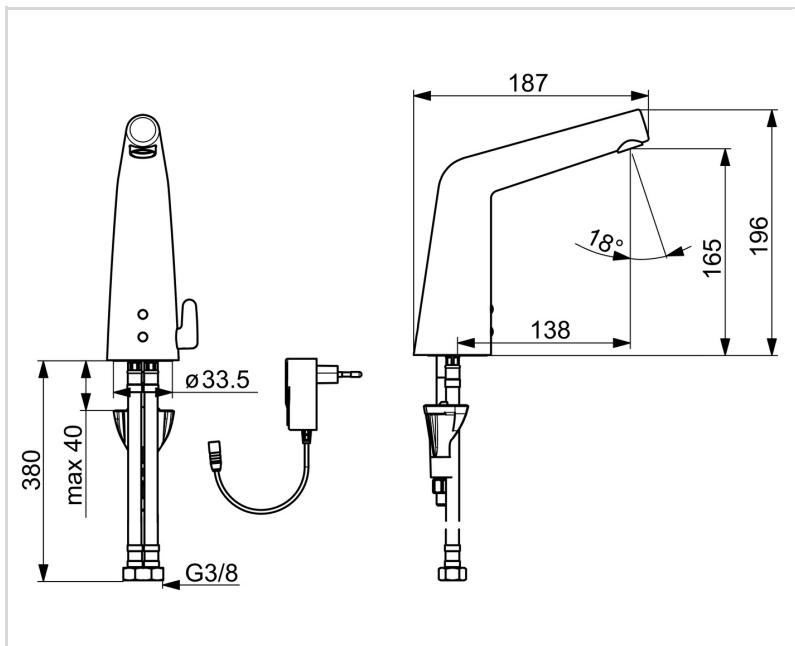
Electrical Connection	230 / 9 V
Bluetooth version	4.x (D034445)

### REGULATIONS

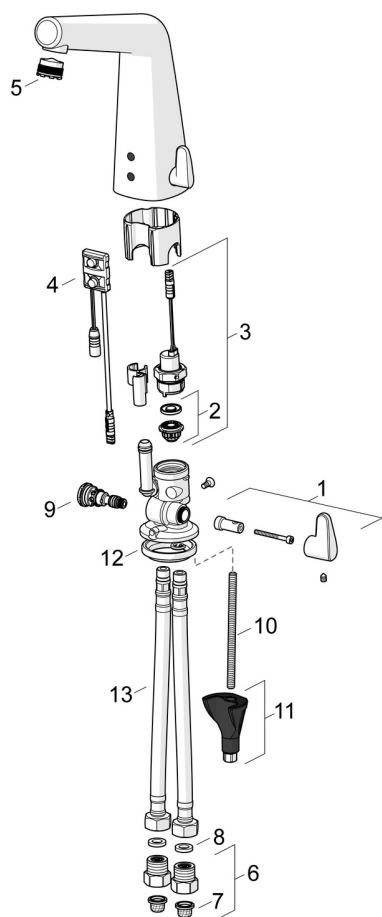
EU Directives	CE Radio Equipment Directive 2014/53/EU , Low Voltage Directive 2014/35/EU , EMC Directive 2014/30/EU , RoHS Directive 2011/65/EU
EN standard	EN 15091, ETSI EN 301 489-1 V1.9.2 , ETSI EN 300 328 v2.2.2 , EN 61000-6-1:2007 , EN 61000-6-3:2007+A1:2011+AC:2012 , EN 60335-1:2012+A11+A13+A14+A14+A2+A15:2021, Part 19.11.4
Noise class	I (ISO 3822) Oras lab.
Protection class	IP 55 / transformer IP 20

### APPROVALS AND DECLARATIONS

STF certificate	EUF129-19004498-TH2
KIWA SE	1606
Declaration of conformity	RED



**SPARE PARTS**



**SP3016FT**

Name	Code
01 Temperature control handle Chrome	1002424V
02 Membrane support ring Discontinued	199205V
02 Membrane for solenoid valve	1006500V
03 Solenoid valve, 6 V	199206V
04 Sensor, 6/9/12 V, Bluetooth	1001424V
05 Aerator and key, M18.5x1	601901V
06 One-way valve with litter screen Chrome	198473/2
07 Litter filters	199257/2
08 Gasket, 8x14.3x2	600705/10
09 Temperature regulator	199201V
10 Fixing screw, M8x1, L=130	1000780V
11 Fixing set	602610V
12 Bottom seal	1002371V
13 Flexible pipe, L=400, G3/8-M10x1	1002311/2
N.I. Limiter	601061V