



3930F-106 ORAS SAGA ECO KITCHEN FAUCET

SINGLE-LEVER

EAN: 6414150100284 static.oras.com/3930F-106



- ECO Building, Housing
- Deck mounted
- Chrome
- Swivel spout, Swivel range limiting option
- Standard aerator
- Single operating lever/handle, Hot/Cold symbols
- Limitation option for maximum temperature and flow-rate
- ø 35 mm ceramic cartridge for flow and temperature control
- Flexible inlet pipes

TECHNICAL DATA

FLOW PROPERTIES

Flow-rate at 300 kPa (with flow controller) **0.1 l/s**

TECHNICAL PROPERTIES

Hot water supply **max. +70°C**
Working pressure **50 - 1000 kPa**
Connection size **G3/8**
Projection **215 mm**
Backflow prevention (EN1717) **AA**
Material **Brass**

REGULATIONS

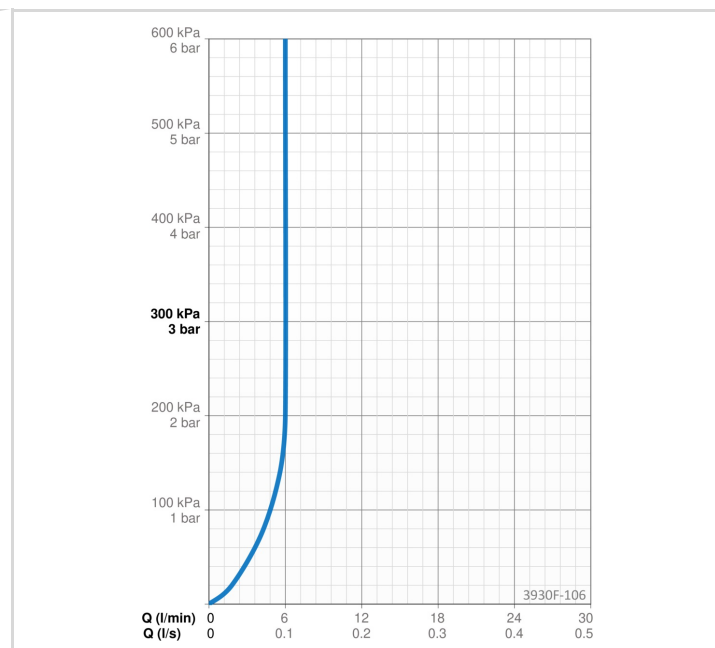
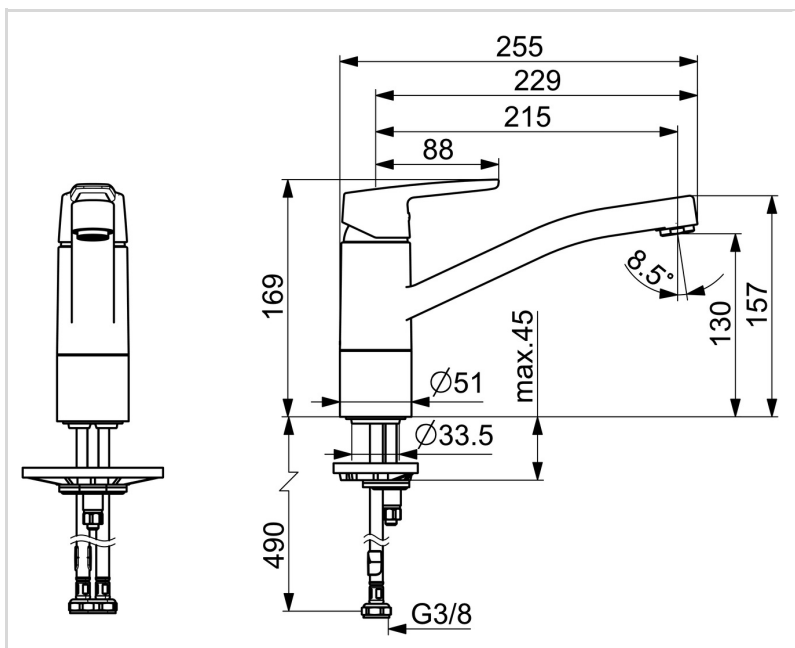
EN standard **EN 817**
Noise class **I (ISO 3822) Oras lab.**

APPROVALS AND DECLARATIONS

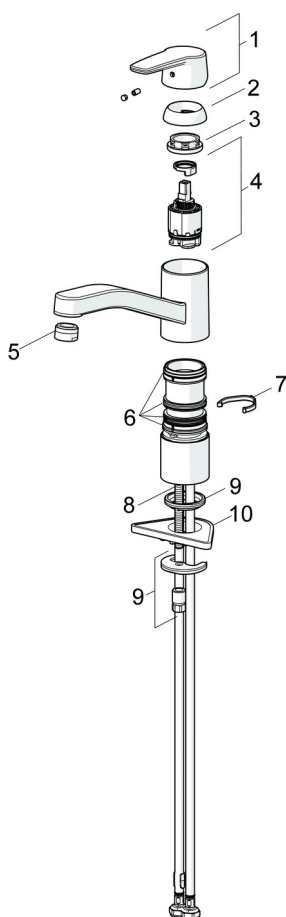
KIWA SE **1444**
Declaration of conformity **DoC**
EPD **S-P-06396**

SUSTAINABILITY

EPD module A1-A3 (kg CO2 eq.) **10,62**
EPD module A4 (kg CO2 eq.) **0,21**
EPD module B7 (kg CO2 eq.) **2364,00**
EPD module C2 (kg CO2 eq.) **0,02**
EPD module C3 (kg CO2 eq.) **0,02**
EPD module C4 (kg CO2 eq.) **0,32**
EPD module D (kg CO2 eq.) **-6,00**



SPARE PARTS



SP3930F-GB

Name	Code
01 Lever Chrome	1000801V
02 Covering cap Chrome	601967V
03 Tightening nut, M37x1, SW30	1005680V
04 Cartridge, 3.5 Classic	601969V
05 Aerator, M24x1, 6 l/min Chrome	199266V
05 Aerator, M24x1, -104	601434V
06 Sealing kit	1001264V
07 Spout overturning stopper, 120°	1001406/10
08 Fixing screw, M8x1, L=140	601970V
09 Fixing set	601985V
10 Supporting plate, 100x60mm	158825