



# 4769-81 ORAS AURELIA SHOWER FAUCET WITH SHOWER SET

THERMOSTATIC

EAN: 6414150104954 [static.oras.com/4769-81](http://static.oras.com/4769-81)

Oras Aurelia. A Harmony of Simplicity and Elegance.

The timeless silhouette of an ancient, handcrafted bridge, perfectly mirrored in tranquil waters, evolves into a slender and elegant cylindric thermostat. Meticulously designed handles seamlessly complete the form without compromising functionality, exuding elegance from every angle.

The perfect designed handles completing the design with out losing its functionality. It becomes easy with simple, in few movement to adjust flow and temperature for your decried settings for the perfect shower experience.

AURELIA draws design inspiration from the exquisite elements of wild nature. From the graceful Lotus flower transformed into a spray face, designed for pure enjoyment, to the simplest curve of a tiny waterdrop.

110mm – 3 spray face Handshower

Easy push diverter for simple selection of spray face

Easy to adjust shower holder



## ELEVATING YOUR MOMENTS

- Wall mounted
- Brushed bronze
- Temperature control handle, Flow control handle, Hot/Cold symbols, Eco feature for water flow
- Hand shower, Shower rail, Adjustable shower rail bracket, Soap dish, Shower hose (1750 mm), Variable fixing points, Anti limescale technology (easy to clean), Twist guard for shower hose
- Pulsating - Strong water stream for massage or body treatment, Intense - invigorating water stream, Relaxing - Soft water stream, pleasant for entire body
- Safety stop against scalding at 38°C, The housing of the fittings conducts minimal heat
- Ceramic head part for flow control, Thermostatic cartridge for automatic temperature control, Non-return valve(s), Litter filter(s)
- Direct connection, Internal thread, Cover plate(s)
- Inner body made of DZR brass, Flexible length / can be shortened, Anti-twist hose connector
- Without couplings
- 3 spray functions

## TECHNICAL DATA

### FLOW PROPERTIES

Eco-flow at 300 kPa	0.17 l/s
Flow-rate at 300 kPa	0.18 l/s
Pressure loss with flow (0.2 l/s)	185 kPa

### TECHNICAL PROPERTIES

Hot water supply	max. +65°C
Working pressure	100 - 1000 kPa
Connection size	G3/4
Installation width	150 ± 3 mm
Length / Height	770 mm
Backflow prevention (EN1717)	EB
Material	Brass/Composite

### REGULATIONS

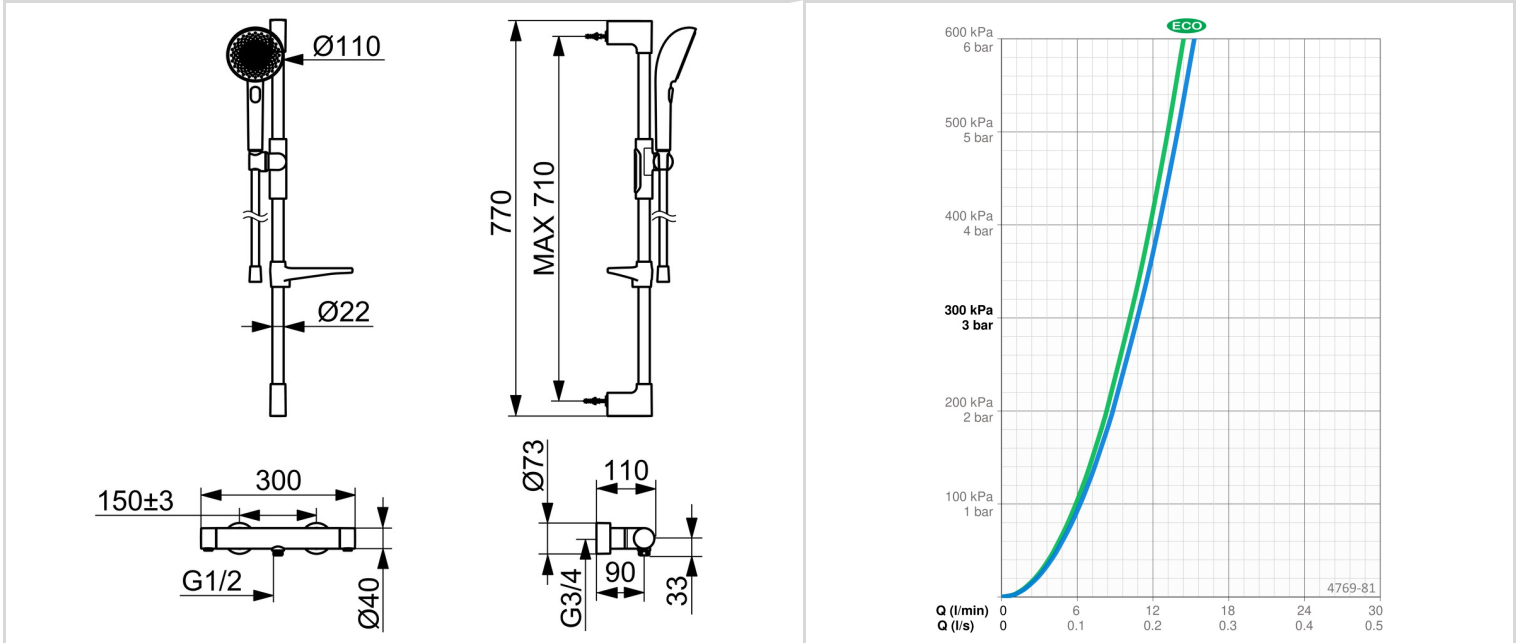
EN standard	EN 1111, EN 1112, EN 1113
Noise class	I (ISO 3822)

### APPROVALS AND DECLARATIONS

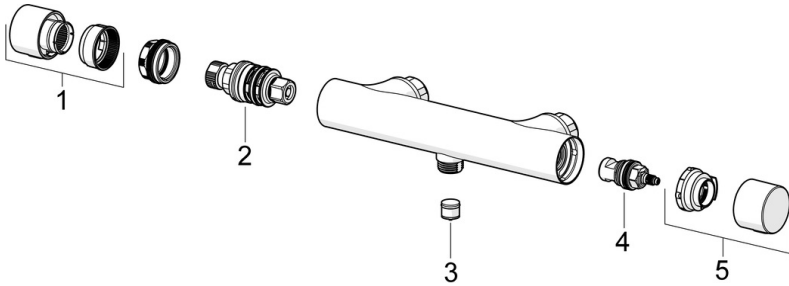
Declaration of conformity	DoC
EPD	S-P-07819

## SUSTAINABILITY

EPD module A1-A3 (kg CO2 eq.)	13,79
EPD module A4 (kg CO2 eq.)	0,36
EPD module B7 (kg CO2 eq.)	1968,60
EPD module C2 (kg CO2 eq.)	0,03
EPD module C3 (kg CO2 eq.)	0,03
EPD module C4 (kg CO2 eq.)	0,76
EPD module D (kg CO2 eq.)	-9,01



## SPARE PARTS



### SP4760CLR

	Name	Code
01	Temperature control handle Matt black	1018476V-33
01	Temperature control handle Brushed steel	1018476V-80
01	Temperature control handle Brushed bronze	1018476V-81
02	Thermostatic cartridge	178780V
03	Non-return valve, DW15/DN10K	1018484V
04	Headpart Chrome	109898
05	Flow control handle Matt black	1018478V-33
05	Flow control handle Brushed steel	1018478V-80
05	Flow control handle Brushed bronze	1018478V-81