



# 5738FTZ ORAS CARE HYBRID KITCHEN FAUCET, 230/9 V, BLUETOOTH

HYBRID, PLUG TRANSFORMER, BLUETOOTH®

EAN: 6414150102059 [static.oras.com/5738FTZ](http://static.oras.com/5738FTZ)

Care Hybrid series is giving you a whole new modern design to fit into any kitchen. Lever can easily be moved by using the backside of the hand and with our intelligent touchless functions build into same faucet it also supports hygiene operation without any touch needed.  
standard aerator installed - Laminar aerator included in box

Bluetooth Hybrid faucet with Laminar flow aerator.

Easy grip temperature lever for good grip and easy adjustment.

SMART intelligent bluetooth sensor with 3 optical lenses for improved performance supported by app connection for personalized and easy adjustment of sensor settings.

Antiscalding protection for Sensor operation.

Easy installation due to fast and easy 3S installation system.



- Health & Care, Public & Semi-public
- Deck mounted
- Chrome
- Swivel spout, Swivel range limiting option, Profile construction
- Standard aerator
- Single operating lever/handle, Hot/Cold symbols
- Limitation option for maximum temperature and flow-rate
- ø 40 mm ceramic cartridge for flow and temperature control
- Advanced PSD sensor, Solenoid valve, Power supply
- Flexible inlet pipes
- Inner body made of DZR brass, 3S-installation system for safe and simple mounting

## TECHNICAL DATA

### FLOW PROPERTIES

Flow-rate at 300 kPa	0.23 l/s
Pressure loss with flow (0.2 l/s)	220 kPa

### TECHNICAL PROPERTIES

DN-size (nominal dimension)	DN6
Hot water supply	max. +70°C
Working pressure	50 - 1000 kPa
Connection size	G3/8
Projection	178 mm
Backflow prevention (EN1717)	AA
Material	Brass

### SOFTWARE SETTINGS

Automatic flush	off (off/1-120 h)
Automatic flush period	30 s (1-1800 s)
Max. flow period	10 s(1 - 1800 s)

### ELECTRONIC PROPERTIES

Electrical Connection	230 / 9 V
Bluetooth version	5.x (D060576)

### REGULATIONS

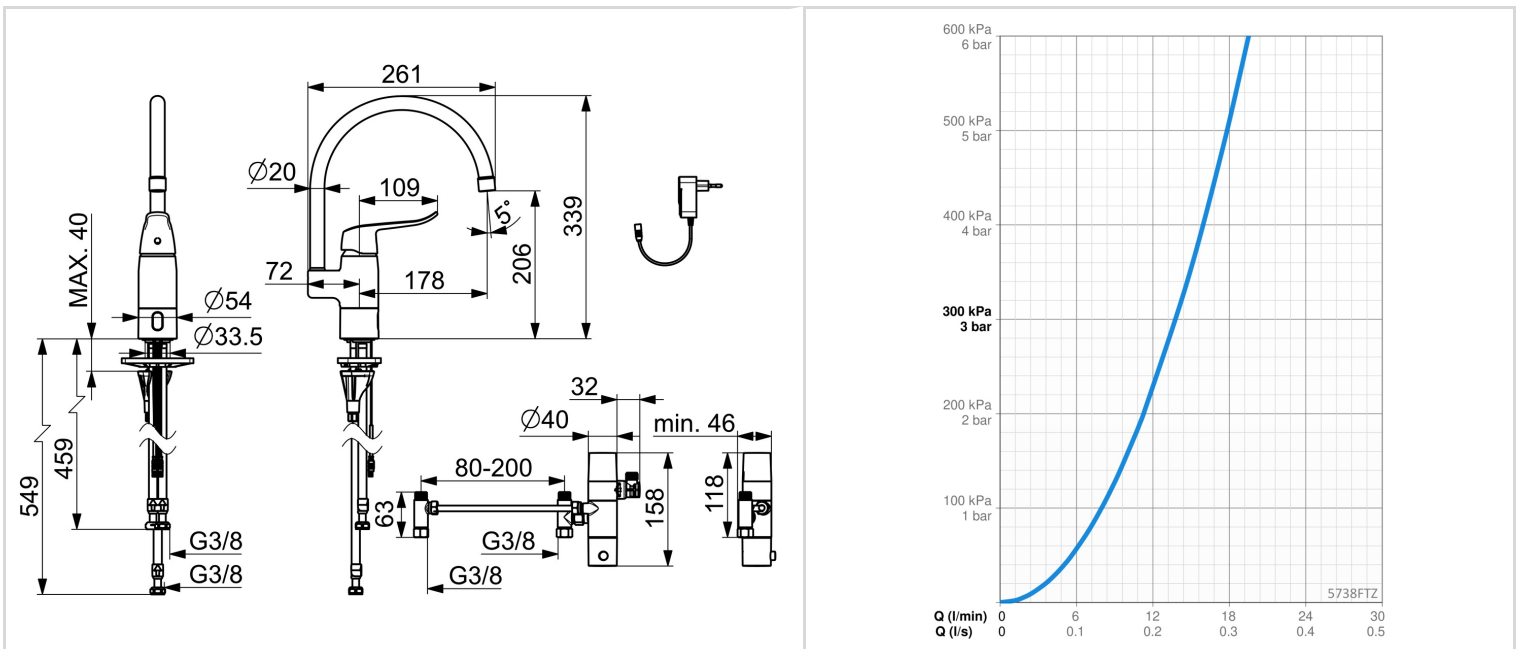
EU Directives	CE Radio Equipment Directive 2014/53/EU , Low Voltage Directive 2014/35/EU , EMC Directive 2014/30/EU , RoHS Directive 2011/65/EU
EN standard	EN 817, EN 15091, ETSI EN 301 489-1 V1.9.2 , ETSI EN 300 328 v2.2.2, EN 18031-1, EN 61000-6-1:2007 , EN 61000-6-3:2007+A1:2011+AC:2012 , EN 60335-1:2012+A11+A13+A14+A15:2021, Part 19.11.4
Noise class	I (ISO 3822)
Protection class	IP 55 / transformer IP 20

### APPROVALS AND DECLARATIONS

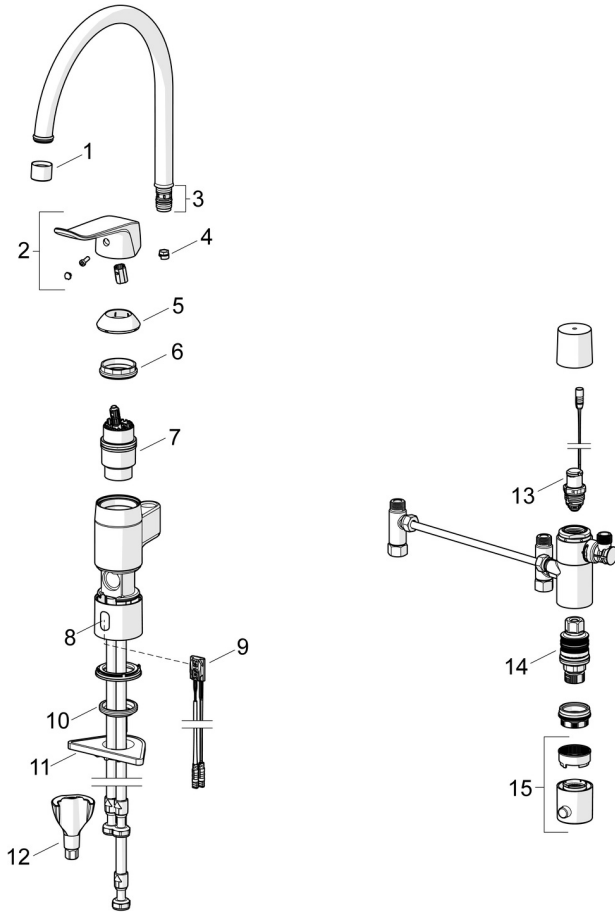
STF certificate	<b>EUFI29-23004174-TH</b>
KIWA SE	<b>1888</b>
Declaration of conformity	<b>RED</b>
EPD	<b>S-P-07817</b>

### SUSTAINABILITY

EPD module A1-A3 (kg CO2 eq.)	<b>25,33</b>
EPD module A4 (kg CO2 eq.)	<b>0,68</b>
EPD module B7 (kg CO2 eq.)	<b>2718,60</b>
EPD module C2 (kg CO2 eq.)	<b>0,03</b>
EPD module C3 (kg CO2 eq.)	<b>0,04</b>
EPD module C4 (kg CO2 eq.)	<b>0,65</b>
EPD module D (kg CO2 eq.)	<b>-12,28</b>



## SPARE PARTS



### SP5738FZ

	Name	Code
01	Aerator, M22x1 STD PL HC A Laminar Chrome	1003610V
02	Lever, L=136 Chrome	1005294V
03	Sealing kit	159499
04	Spout overturning stopper, 60°/0°	159667/10
04	Spout overturning stopper, 120°	159670/10
05	Covering cap Chrome	602589V
06	Tightening nut, M42x1.5, SW 38	158726
07	Cartridge	158890
08	Window	1014281V
09	Sensor, 3/9 V, Bluetooth	1014212V
10	Bottom seal	1002371V
11	Supporting plate, 100x60mm	158825
12	Fixing set	602610V
13	Pilot valve, 3 V	601884V-F
14	Thermostatic cartridge	178780V
15	Temperature control handle Chrome	602062V
N.I.	Battery, (2x) 1.5 V AA Lithium	600599V