

EAN: 6414150051371 [static.oras.com/8530](http://static.oras.com/8530)

Kitchen faucet with a swivel spout. Spout swing angle either 60°, 85° or 110° (factory default). Aerator integrated into the spout.

Design: Alessandro Mendini



- Deck mounted
- Chrome
- Swivel spout
- Hidden aerator
- Single operating lever/handle, Pin shape, Hot/Cold symbols
- Limitation option for maximum temperature and flow-rate
- ø 40 mm ceramic cartridge for flow and temperature control

### TECHNICAL DATA

#### FLOW PROPERTIES

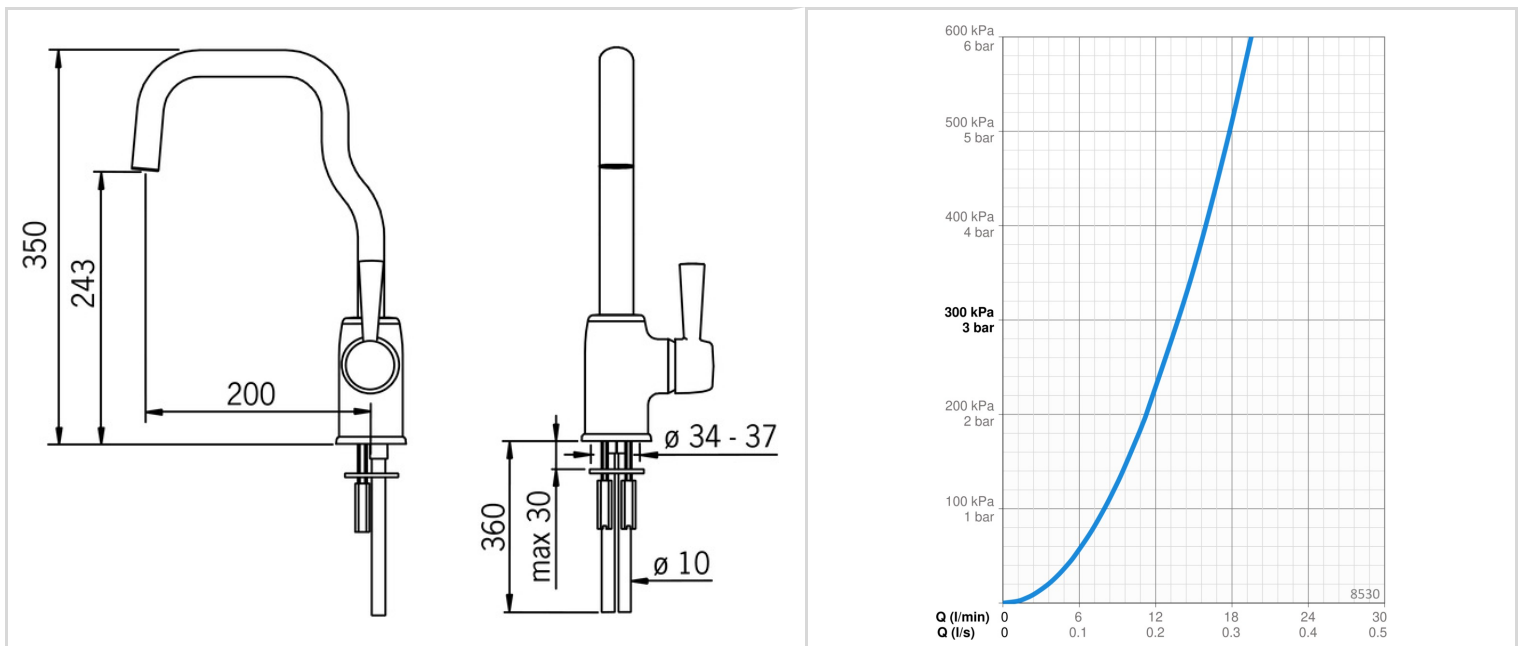
Flow-rate at 300 kPa	<b>0.23 l/s</b>
Pressure loss with flow (0.2 l/s)	<b>215 kPa</b>

#### TECHNICAL PROPERTIES

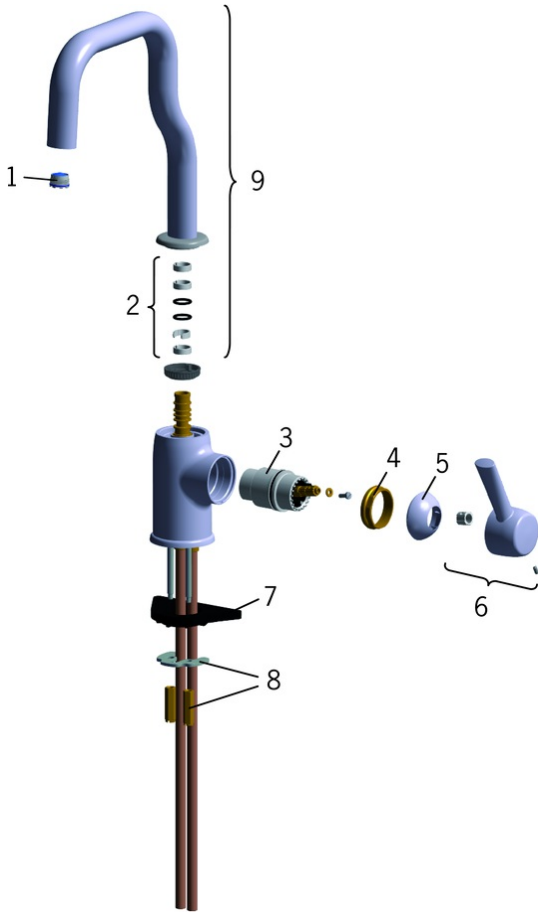
Hot water supply	<b>max. +80°C</b>
Working pressure	<b>50 - 1000 kPa</b>
Connection size	<b>Ø 10 mm</b>
Projection	<b>200 mm</b>
Backflow prevention (EN1717)	<b>AA</b>
Material	<b>Brass</b>

#### REGULATIONS

EN standard	<b>EN 817</b>
Noise class	<b>I (ISO 3822)</b>



**SPARE PARTS**



**SP8530**

	<b>Name</b>	<b>Code</b>
01	Aerator and key, M18.5x1 Chrome	859338V
02	Sealing kit for spout	198287V
03	Cartridge	158890
04	Tightening nut, M42x1.5, SW 38	158726
05	Covering cap Chrome	859103V
06	Lever	859332V
07	Supporting plate, 100x60mm	158825
08	Fixing plates with nuts	158697
09	Spout Discontinued	859331V